

Keeping pace with the high-tech sector.
It's what we do.



In the high-tech world, fast is never fast enough and every delay is a lost opportunity. So for players in the high-tech space, choosing the right customs and logistics partner is mission critical.

Robust systems, deep industry experience and unsurpassed technical knowledge converge to make Cole International the company you can trust to keep your shipments – and your business – on the move.

We've been honing our edge as a customs and logistics leader for more than 55 years, and we've been servicing the high-tech sector for as long as 'high-tech' has been a sector. Our broad experience in managing the supply chain for high-tech companies ranges from the integrated circuits business to full satellite inventory importations.

We pride ourselves on knowing what our high-tech clients need. And on delivering – usually before they ask.

As a force to be reckoned with in the high-tech space, you need guarantees of on-time (or ahead-of-time) delivery with pre-arranged customs release. You need e-commerce clearance solutions you can count on. You need fully integrated EDI solutions for inventory management...real-time clearance notifications...document imaging and electronic billing options.

And you need a partner with 24/7 operational support and offices at all major ports of entry – because the success of your business hinges on global service in real time.

Why Cole International?

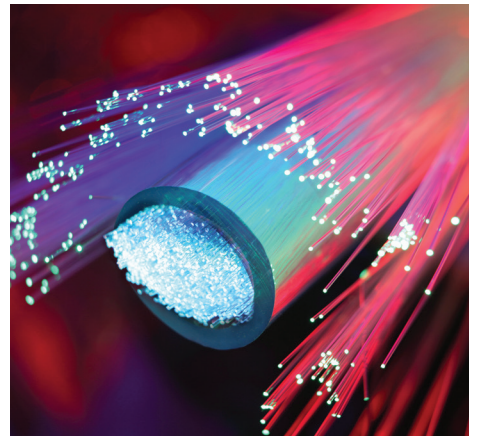
When you partner with Cole International, you can rest assured our professional customs brokers and freight forwarders will be working tirelessly to:

» Accelerate the customs process through fully integrated systems and robust technologies

Our customs and international trade software is designed to expedite the processing of import/export transactions, while our Cole Portal online dashboards provide real-time information on all of your shipments and notification when your goods clear customs.

You can customize and download entry analysis data to assist in customs compliance and feed your accounting systems with detailed broker invoice information. Cole Portals are customizable to align with your business processes and logistics requirements.

Backing our IT products, we provide complete systems support through our in-house technical teams. Cole International specializes in developing in-house applications so we can be proactive rather than reactive.



» **Understand and meet your needs by assigning a dedicated representative to your account**

For each Cole International customer, we assign a single point of contact – your assurance that all your questions and real-time needs will be handled personally by a member of our team intimately familiar with your business.

To maintain the high level of technical knowledge that sets Cole International apart and makes us the ideal customs and logistics partner for high-tech companies, we make ongoing training and development for our Technical Service Representatives a strategic priority.

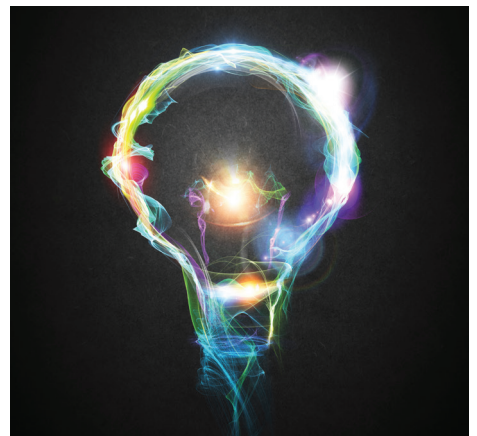
» **Sharpen your competitive edge by minimizing duties and taxes**

From the depth of knowledge and experience of our technical staff, our customers realize substantial value. We research all available relief provisions to ensure customers pay the lowest legally allowable rates for imported goods.

» **Maintain customs compliance to CBSA and CBP standards**

Errors can slip into the system at any number of points along the supply chain.

By accessing electronic data fed directly from our customers, we're able to identify errors before shipments make it into the customs-clearance process, proactively eliminating compliance problems and any associated penalties and delays.



All Systems Go

- Customized e-commerce clearance solutions
- Fully integrated EDI solutions for customs entry creation, enhanced customs clearance and inventory management
- Integration with carriers for real-time clearance notification
- Document imaging and electronic billing options
- Entry summary and KPI reporting and quality control



Logistics. Customs Brokerage. Trade consulting. It's what we do. Relentlessly determined to make our customers' jobs and lives easier, we take a business partner approach to every client relationship. We see – and understand – the big picture, and we go to any lengths to deliver the right solutions and the right answers.